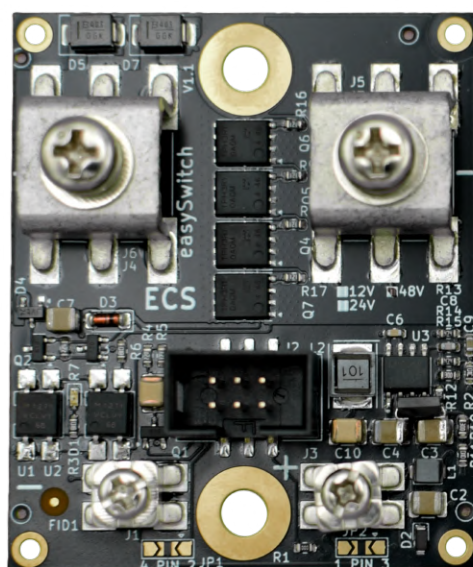




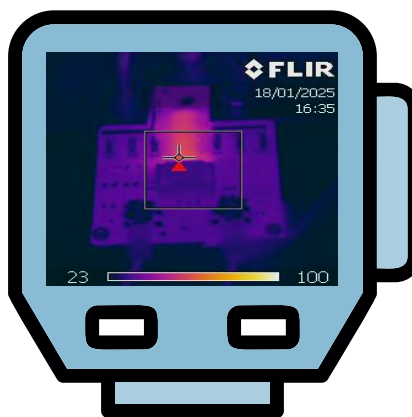
SSR - electronic relay

easySwitch M

This electronic relay enables the simple switching of high DC currents. By consistently reducing the on-resistance, a heat sink is no longer required and the efficiency of your system is significantly increased. This saves costs, space and installation time. With the help of the additional ribbon cable connection, many relays can be connected with very little wiring effort. The larger control voltage range enables simpler control in 48 V systems. Due to the significantly reduced power consumption compared to other manufacturers, this SSR is also ideal for battery operation. The SSR is coated with a protective varnish to protect it from environmental influences and condensation.



Made in Germany



Product features and advantages

- Very low on resistance (down to 0.15 mΩ)
- No heat sink required
- High efficiency
- Currents up to 150 A
- Wide control voltage range
- Very low power consumption
- Additional ribbon cable connection to allow quick installation



www.ecs-online.org
mail@ecs-online.org
+49 (0) 6507 9989955

ECS Falko Jahn e.K.
Am Wenigerflur 14
54498 Piesport





ECS Falko Jahn e.K
Am Wenigerflur 14
54498 Piesport

www.ecs-online.org
mail@ecs-online.org
+49 (0) 6507 9989955



SSR - electronic relay

easySwitch M

	easySwitch M-15	easySwitch M-30	easySwitch M-60	Unit
	Output			
Nominal system voltage	12	24	48	V
Max working voltage	15	30	60	V
Surge peak voltage	30	60	100	V
Max continues current	150	100	75	A
Max peak current (100µs)	1500	1500	1500	A
Max continues cower	1800	2400	3600	W
On resistance	0.4	0.6	1	mΩ
	Surge protection			
Breakdown voltage	17.5	35	70	V
Peak current 8/20 µs puls	400	200	100	A
Peak current 10/1000 µs puls	100	50	25	A
	Control input			
Control voltage	4.9 to 15	4.9 to 30	4.9 to 60	V
Power consumption (typically at 5 V)	55			mW
Max Power consumption	60	70	80	mW
	Mechanical data & environment			
Dimension (LxWxH)	60x50x22			mm
Distance mounting holes	47.55			mm
Power connectors	M5			
Control connectors	M3			
Ambient temperature	-45 bis +80			°C
Protection features	Circuit board is coated to protect Against condensation Control and output is galvanically isolated			
Indicators	LED output on			



Made in Germany